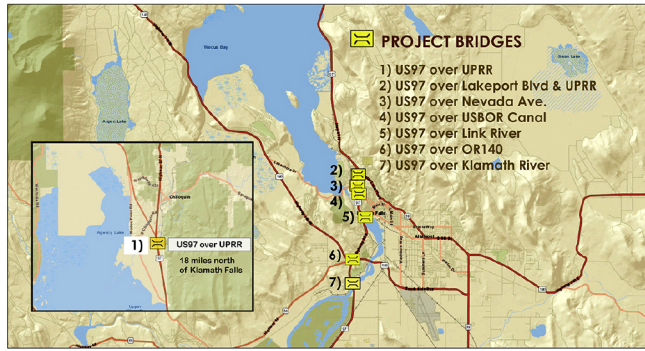
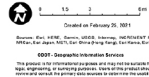


U.S. 97 Seismic Retrofit Bridges - Klamath Falls



Overview Map
ODOT Project #20535
US97 - OR58 - California Border (seismic retrofits)



PROJECT INFORMATION

About:

This project will upgrade six bridges with seismic retrofits and one bridge replacement on U.S. 97 from its intersection with OR 58 south to the California border. The project will also add protective screening on bridges that pass over railroad tracks and upgrade guardrails on bridges with outdated railing.

This project will substantially improve the seismic resiliency of U.S. 97, which is a regional lifeline route in the case of a seismic event.

It is anticipated that most bridges in western Oregon will suffer serious damage or destruction in a major earthquake.

To ensure that U.S. 97 remains a resilient north-south highway corridor, additional work is needed to upgrade and replace seven bridges and improve seismic resiliency.

PHASE Design

SUMMARY

This project will seismically retrofit six bridges and replace one bridge on U.S. 97 from the OR 58 intersection south to the California border.

LOCATION U.S. 97 between OR 58 and the California border.

BUDGET \$32 million

SCHEDULE Contract bid let : Summer 2021
Construction 2021-2025

CONTACT

Cari Charlton, project manager
Cari.Charlton@odot.state.or.us
Ben Ebner, area manager, 541.892.0805
Benjamin.j.Ebner@odot.state.or.us

PROJECT # 20535

Visit www.oregon.gov/ODOT/Projects and type project number into the search field in the Project List section.

Last Updated: 2/2/2021

Access for pedestrians, including those with disabilities, will be available and identified through or around the work zones.

This can be made available in alternate format on request by calling 503-373-7093 or via the Oregon Telecommunications Relay System: 7-1-1 or e-mail: ODOTeoo@ODOT.state.or.us.



Be in the know with TripCheck.com and...

Give yourself more time.



Try a new way of getting there.



CARPPOOL



BUS



WALK



BIKE

Take a different route.

